



Sylff Association

The Ryoichi Sasakawa Young Leaders Fellowship Fund

For Sylff fellows,

The greatest rewards are contributing to and sharing the happiness of others,

Seeing the light in people's eyes when intolerance gives way to understanding,

When the doors that had been closed open to new opportunities and a better future.

The Sylff Association supports fellows committed to taking the small steps that can make a big difference in people's lives. Make use of the networking, funding, and other benefits offered by the Association so that its resources can help you to help others. (Sylff is a joint Tokyo Foundation for Policy Research–Nippon Foundation program. The Association is an initiative by the Tokyo Foundation for Policy Research to create a more personalized program.)

A Dynamic Movement for Positive Change

Message from the Chairman



Sylff is a global fellowship program aimed at nurturing leaders who will initiate action to transcend differences and address issues confronting contemporary society. The qualities such leaders must possess will change as society changes, and forms of effective leadership will invariably differ from one region to another.

As Sylff commemorates its 30th anniversary in 2017, we have made a decision to consolidate the many Sylff stakeholders into what we are calling the Sylff Association to pool the wisdom that has been accumulated over the years and to deepen and strengthen the ties among us. The Association will bring together all current and graduated fellows, steering committee members at the 69 Sylff institutions, and the staff of the Nippon Foundation and the Tokyo Foundation for Policy Research together into a single, more closely identifiable community.

I hope that every one of you will give renewed thought to what leadership qualities are required in today's world to promote peaceful, sustainable, and socially inclusive development. And I hope that you will

actively share your insights, knowledge, and experience with fellow Association members.

One thing that makes Sylff unique from other global fellowship programs is the support offered to fellows throughout their careers—not just during the fellowship period. The new Sylff Association will play a key role in strengthening this distinctive quality.

The choice of what we do with our Association membership, though, is ultimately up to you. I hope you'll choose to maximize your engagement with our community and enrich your Sylff experience. I look forward to working closely with you to make the Sylff Association a truly dynamic movement that facilitates positive change in society.

A handwritten signature in Japanese calligraphy, consisting of four characters: 佐々川 (Sasakawa), 陽平 (Yohei).

Yohei Sasakawa

Chairman of the Sylff Association

Chairman of the Nippon Foundation

| Sylff Support Programs

The Sylff Association offers continuing support to promote fellows' academic advancement and development as leaders, as well as to encourage networking. These programs enable fellows to fully tap the resources of the global Sylff community, facilitating the realization of the Sylff mission.

The Association secretariat is exploring ways to further enhance these programs and develop new ones based on comments provided by fellows. Please visit the Sylff website regularly and check for updates regarding Sylff support programs.

www.sylff.org/support_programs/

For Current Doctoral Students

- Sylff Research Abroad (SRA)

For Past and Current Fellowship Recipients

- Sylff Leadership Initiatives (SLI)
- Sylff Project Grant (SPG)
- Local Association Networking Support (LANS)
- Sylff Disaster Relief Fund (SDRF)

For Past Fellowship Recipients

- Sylff Leaders Workshop
- Post-Doctoral Fellowship (under development)

For Current Doctoral Students



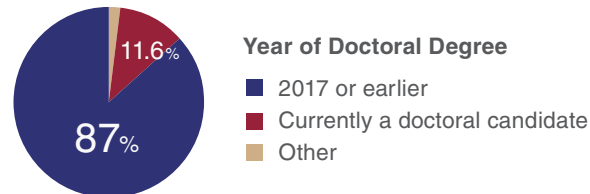
Sylff Research Abroad (SRA)

SRA supports academic research related to a doctoral dissertation conducted in a foreign country at an institution of higher learning or equivalent organization. Applicants are limited to past or current fellowship recipients who are PhD candidates: master's students are encouraged to apply when they proceed to a doctoral program. Up to US\$5,000 is awarded per successful applicant.

www.sylff.org/support_programs/sra/

SRA Survey 2017

The results of a survey conducted in 2017 targeting all SRA awardees to ascertain the usefulness of an SRA in earning doctorates show that most have successfully earned a doctoral degree.





Rosanne Jocson, a Sylff fellow while at Ateneo de Manila University and currently a PhD student at the University of Michigan, investigated protective factors that buffer the negative effects of poverty and adverse living conditions on low-income urban Filipino mothers and fathers.



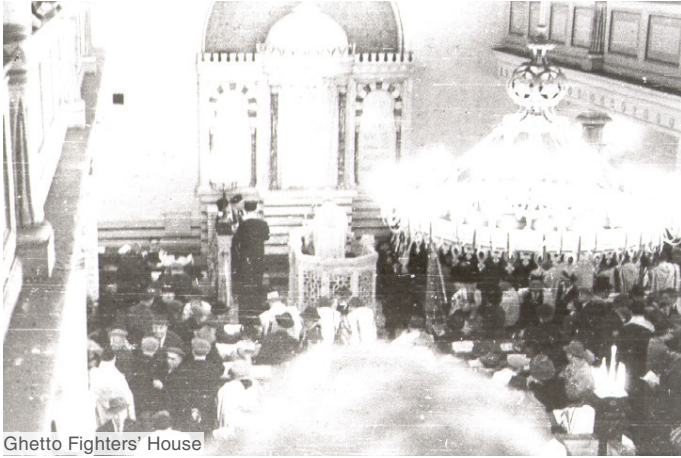
It is said that there are more than 6,000 languages spoken today in the world, most of them being so-called minority languages that are endangered. **Timothy Roth** of the University of Helsinki conducted fieldwork in Tanzania to examine four Mara Bantu languages that are in danger of disappearing.



Using an SRA award, **Alice Beban** of Massey University conducted fieldwork examining the political, social, and ecological implications of the “leopard skin” land reforms in Cambodia, which envisaged large-scale agribusinesses and smallholders coexisting like animal spots on the landscape.



Chiara Digrandi of the Institute of Political Education “Pedro Arrupe” conducted a workshop with a group of displaced women in the outskirts of Bogotá in Colombia to investigate the meaning of community video and cinema as a form of individual and collective recognition.



Karina Barkane of the University of Latvia visited the YIVO Institute for Jewish Research in the United States to examine unexplored aspects of Jewish religious life in the Latvian Soviet Socialist Republic and learned of the challenges of preserving Jewish religious and cultural identity under the communist regime.

For Past and Current Fellowship Recipients



Sylff Leadership Initiatives (SLI)

SLI supports Sylff fellows wishing to undertake social action projects or to organize a forum, conference, seminar, or workshop addressing social issues. Up to US\$10,000 is awarded per project. Participation of non-fellows under the initiative of Sylff fellows is also welcome.

www.sylff.org/support_programs/sli/



Chika Ezeanya of Howard University organized a youth development workshop for 30 students in post-genocide Rwanda, promoting character building and effective leadership to enable the country to meet its goals for economic growth and social cohesion.



Carl-Emmanuel Fisbach of the Paris Conservatoire used the uplifting power of music as a tool for social education and personal development in disadvantaged communities of Peru, artistically engaging with the local population through concerts and teaching sessions.



Joe McCarter of the Victoria University of Wellington organized a workshop for cultural revitalization to promote the preservation of indigenous knowledge and practice in the Solomon Islands, inviting Vanuatu field-workers to share their experience and knowledge.



Lindsey Lim of Columbia University organized the Kasambahay Savings Project to promote financial inclusion targeting full-time domestic workers in the Philippines, enabling these workers—who are paid in cash—to open bank accounts and receive a broader range of financial services.



Rimple Mehta of Jadavpur University organized a workshop on the theme of the deprived human rights of women prisoners in India. This workshop was the first step toward building a network with practitioners, scholars, and activists to work as a pressure group to ensure the rights of women in prison.

For Past and Current Fellowship Recipients



Sylff Project Grant (SPG)

The Sylff Project Grant is intended to support fellows who are actively and deeply committed to helping resolve issues confronting contemporary society. This grant supports innovative social-impact projects led by Sylff fellows on a larger scale than Sylff Leadership Initiatives (SLI) and that can be sustained, enhanced, and expanded over time.

www.sylff.org/support_programs/project_grant/



Yutaka Tokushima of Keio University is the first fellow to receive an SPG grant. Specializing in fabrication design, Tokushima initiated a project aimed at leveraging digital technology to provide affordable prosthetic legs to low-income individuals in the Philippines.



Local Association Networking Support (LANS)

LANS facilitates the organization of gatherings and other activities by groups of Sylff alumni, including local Sylff associations. Groups of five or more fellows and/or alumni from the same institution can apply for a maximum of US\$5,000 per gathering to cover the long-distance transportation costs of participating fellows.

www.sylff.org/support_programs/lans/



The **Jadavpur University Sylff Association** was the first to take advantage of networking support, using a grant to invite JU fellows from Britain, Ireland, and various cities in India for a two-day alumni gathering in March 2018 in Kolkata.



Sylff Disaster Relief Fund (SDRF)

SDRF supports relief activities led by Sylff fellows in the wake of large-scale natural disasters occurring in the vicinity of Sylff institutions. The Tokyo Foundation for Policy Research donates US\$50,000 per incident and pools donations from other Sylff Association members. www.sylff.org/support_programs/sylff-disaster-relief-fund/



Fernanda Herrera Lopez and **Erick Serna** of El Colegio de México led relief efforts for the victims of the September 2017 Mexico City Earthquake. The effort was supported by SDRF and donations from a fellow at Belgrade University and the Jadavpur University Sylff Association.

For Past Fellowship Recipients



Sylff Leaders Workshop

The Leaders Workshop provides opportunities for intensive intercultural group learning and leadership enhancement based on the scenario-planning approach. The workshop—intended for researchers and practitioners with substantial expertise and experience—will initially be held in Japan, with participants being invited to weeklong sessions in fall 2018 and spring 2019. www.sylff.org/support_programs/leaders_workshop/



Post-Doctoral Fellowship (under development)

Those who recently earned doctoral degrees will be given an annual stipend to allow them to deepen and broaden their research and prepare for a career in academia or public policy. www.sylff.org/support_programs/post_doctoral_fellowship/

| List of Sylff Institutions

Sylff is a decentralized program under which each Sylff institution is responsible for identifying and nurturing future leaders capable of transcending geopolitical, religious, ethnic, cultural, and other differences to contribute to the peace and well-being of humankind. The 69 Sylff institutions are spread out over 44 countries around the world to enable the selection of students best suited to addressing the issues confronting each country and region.

About Sylff

Launched in 1987, the Ryoichi Sasakawa Young Leaders Fellowship Fund, or Sylff, is a fellowship program aimed at identifying and nurturing future leaders capable of transcending geopolitical, religious, ethnic, cultural, and other differences to contribute to the peace and well-being of humankind by supporting outstanding students pursuing graduate studies in the humanities and social sciences. The program has supported approximately 16,000 fellows to date.

Australia

- UNSW Business School

Austria

- University of Music and Performing Arts Vienna

Brazil

- University of São Paulo

Bulgaria

- Sofia University "St. Kliment Ohridski"

Canada

- York University

Chile

- University of Chile

China

- Chongqing University
- Fudan University
- Inner Mongolia University
- Jilin University
- Lanzhou University
- Nanjing University
- Peking University
- Sun Yat-sen University
- Xinjiang University
- Yunnan University

Czech Republic

- Charles University

Denmark

- University of Copenhagen

Egypt

- The American University in Cairo

Fiji

- University of the South Pacific

Finland

- University of Helsinki

France

- Conservatoire national supérieur de musique et de danse de Paris
- INSEAD

Germany

- Ruhr University Bochum
- University of Leipzig

Greece

- National and Kapodistrian University of Athens

Hungary

- Hungarian Academy of Sciences*
Corvinus University of Budapest
Debrecen University
Eötvös Loránd University
University of Pécs
University of Szeged

India

- Jadavpur University

- Jawaharlal Nehru University

Indonesia

- Gadjah Mada University
- University of Indonesia

Israel

- Ben-Gurion University of the Negev

Italy

- Institute of Political Education
"Pedro Arrupe"

Japan

- Keio University
- Ritsumeikan Asia Pacific University
- Waseda University

Jordan

- University of Jordan

Kenya

- University of Nairobi

Latvia

- University of Latvia

Malaysia

- University of Malaya

Mexico

- El Colegio de México

Mongolia

- National Academy of Governance

Netherlands

- Utrecht University

New Zealand

- Massey University*
- Auckland University of Technology*
- Lincoln University*
- University of Auckland*
- University of Canterbury*
- University of Otago*
- University of Waikato*
- Victoria University of Wellington*

Norway

- University of Oslo

Philippines

- Ateneo de Manila University

Poland

- Jagiellonian University

Portugal

- University of Coimbra

Serbia

- University of Belgrade

Slovakia

- Comenius University in Bratislava

South Africa

- University of the Western Cape

Spain

- University of Deusto

Sweden

- Uppsala University

Switzerland

- Graduate Institute of International
and Development Studies

Thailand

- Chiang Mai University

Turkey

- Ankara University

United Kingdom

- University of Sussex

USA

- Columbia University
- Howard University
- University of Oregon*
- Oregon State University*
- Portland State University*
- Princeton University
- The Juilliard School
- University of Texas at Austin
- The Fletcher School of Law and
Diplomacy
- University of California, Berkeley
- University of California, San Diego
- University of Michigan
- Yale University

Vietnam

- Vietnam National University, Hanoi*
- Viet Nam National University*
Ho Chi Minh City

* Denotes institutions that administer the Sylff program on behalf of other institutions.



Sylff Association

c/o The Tokyo Foundation for Policy Research

Roppongi Grand Tower, 34th Fl.,

3-2-1 Roppongi, Minato-ku, Tokyo 106-6234, Japan

Tel +81-3-5797-8402

Fax +81-3-5570-6032

Email sylff@tkfd.or.jp

Website <https://www.sylff.org>

June 2018